

# New Mobility in Seattle

An introduction to new mobility and  
Seattle's New Mobility Playbook





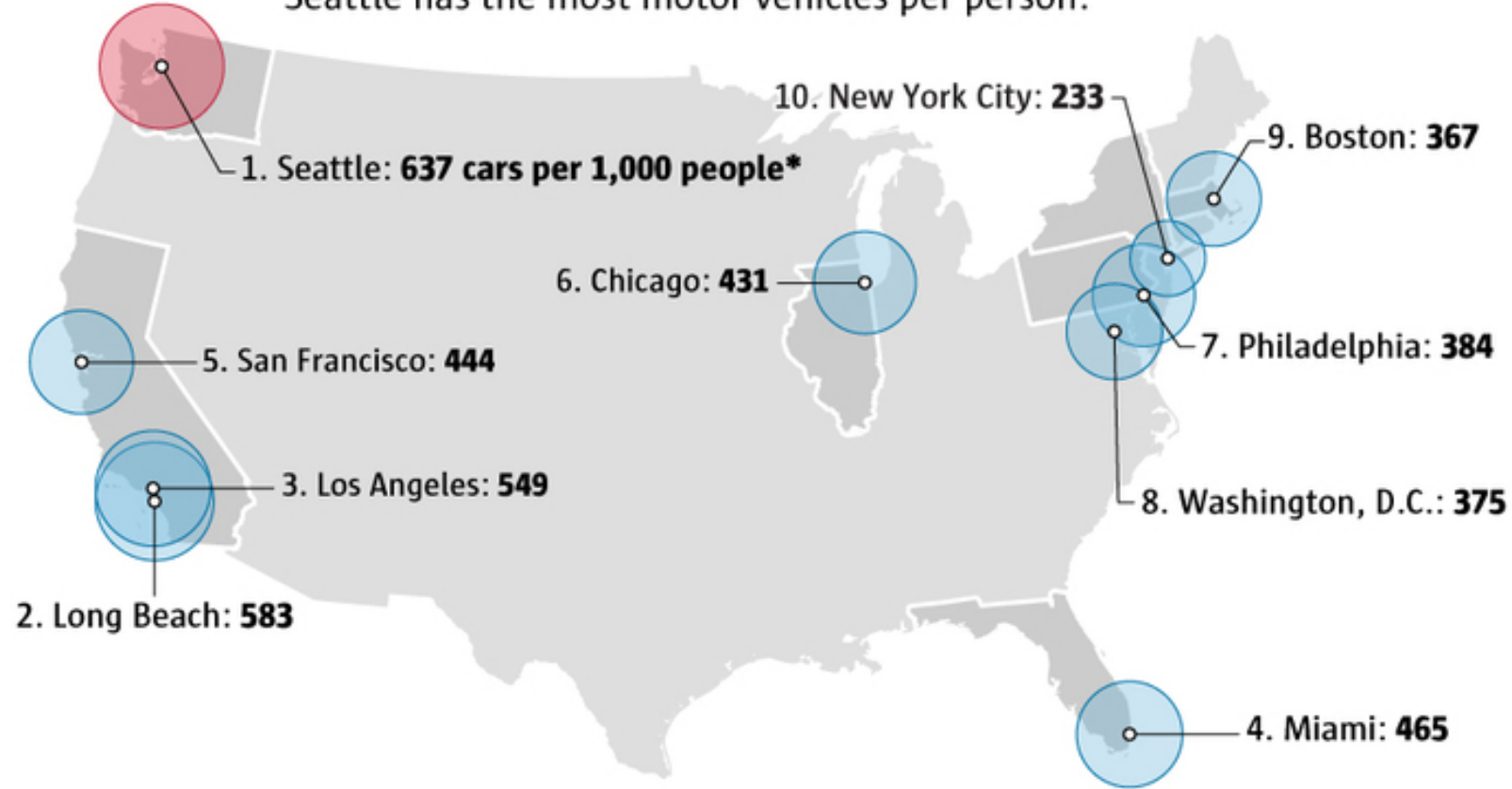


Image: Downtown Seattle Association



# Seattle tops cities in per-capita car ownership

Among the 10 most densely populated big U.S. cities,  
Seattle has the most motor vehicles per person.



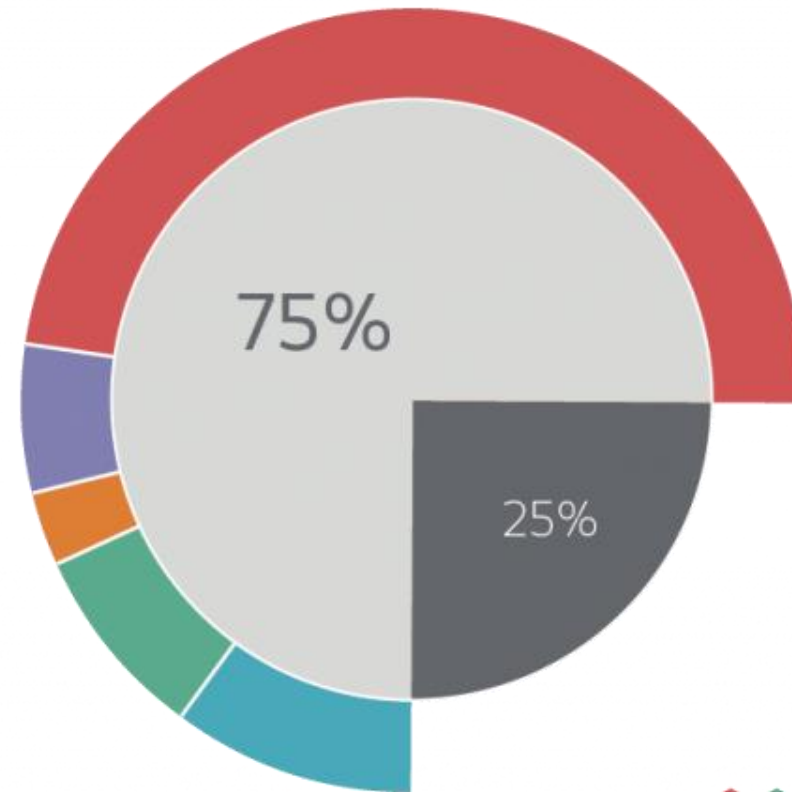
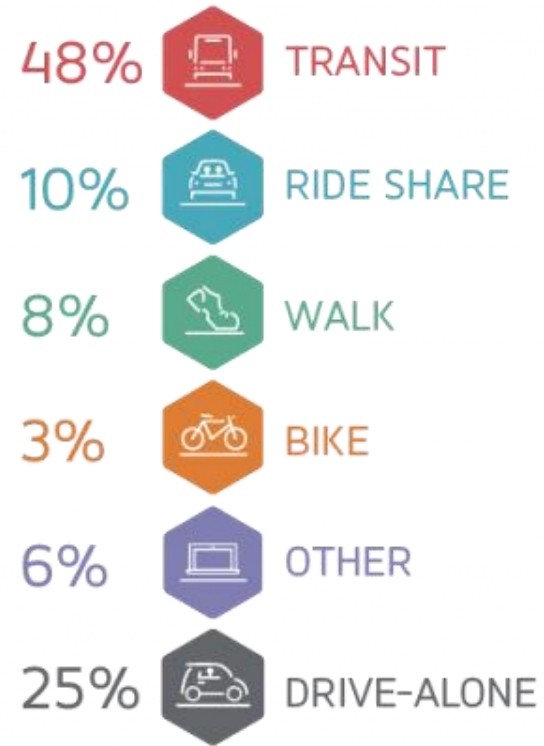
*\*Includes owned or leased passenger cars, vans and pickup trucks that are kept at home and available for use by household members. Vehicles used exclusively for business, or not in working order, are excluded.*

*Source: U.S. Census, 2015*

AMANDA E. WELCH / THE SEATTLE TIMES



## How Commuters Got Downtown in 2017



Commuters surveyed arrived to work 6-9am

**TRANSIT:** Includes bus, rail, and walk-on ferry passengers.

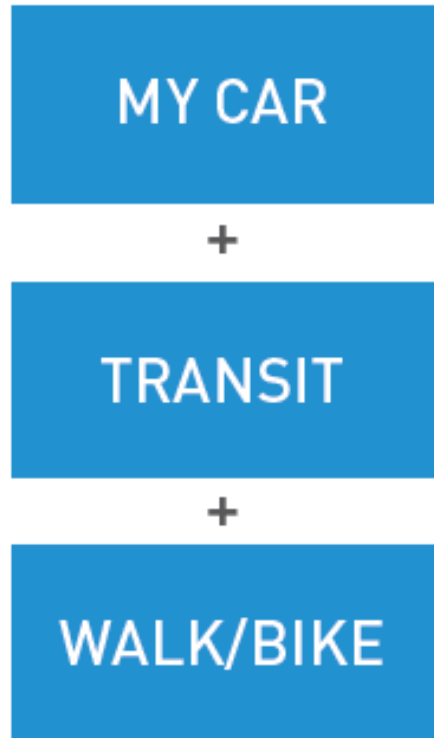
**RIDESHARE:** Includes carpool and vanpool.

**OTHER:** Includes telecommute, compressed work week, and other as noted by survey participants.

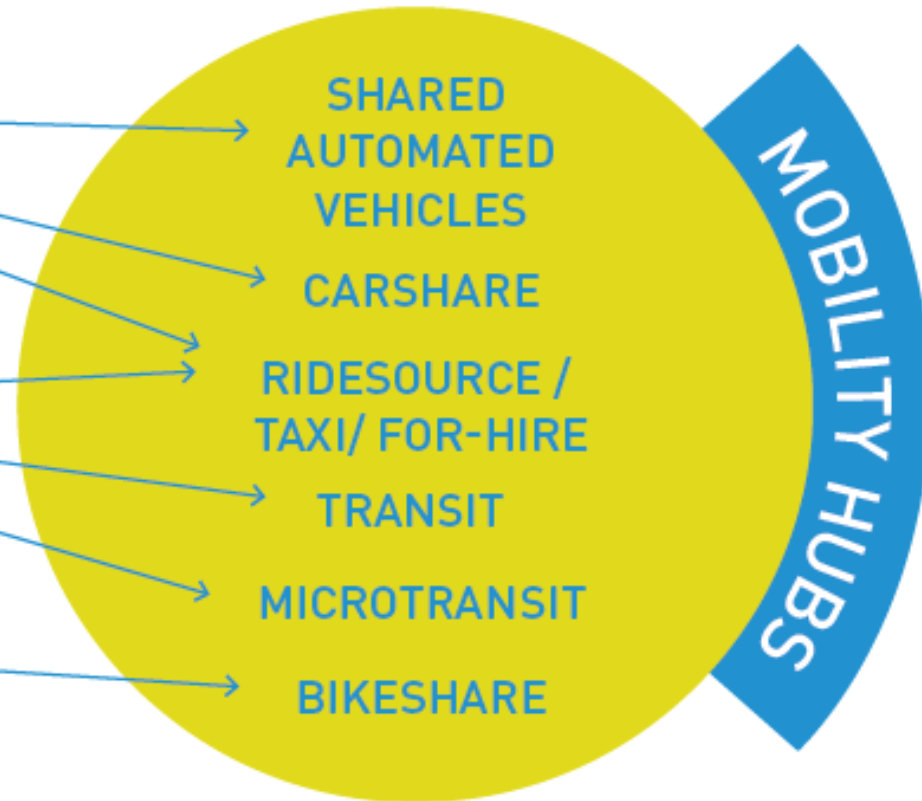


commute seattle

## TRADITIONAL SILOES

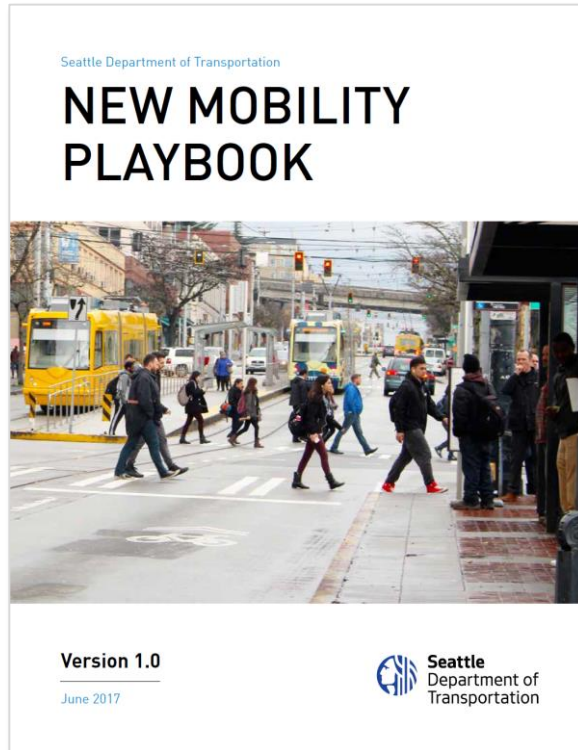


## MOBILITY AS A SERVICE PARADIGM









PRINCIPLES FOR NEW MOBILITY

Put People  
and Safety  
First

Design for  
Customer  
Dignity and  
Happiness

Advance  
Race and  
Social  
Justice

Forge  
a Clean  
Mobility  
Future

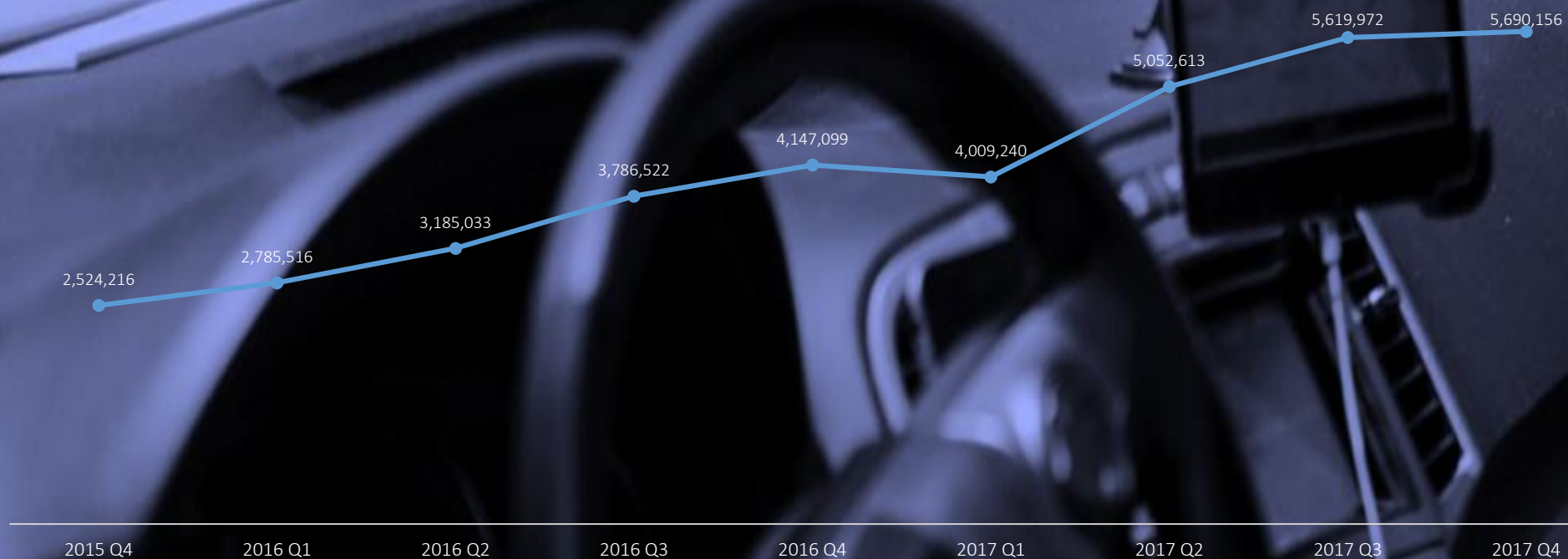
Keep  
an Even  
Playing  
Field



IF WE LEAVE IT TO CHANCE...



IF WE SHAPE IT...



Sources: "Can traffic sensors detect vehicle cruising?", 2017. Seattle DOT and Data Science for Social Good..



ASSISTANCE FROM  
TECHNOLOGY

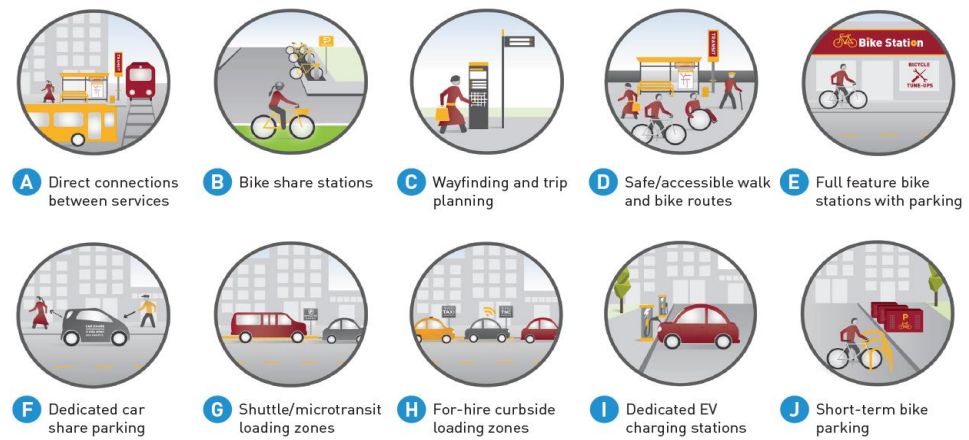
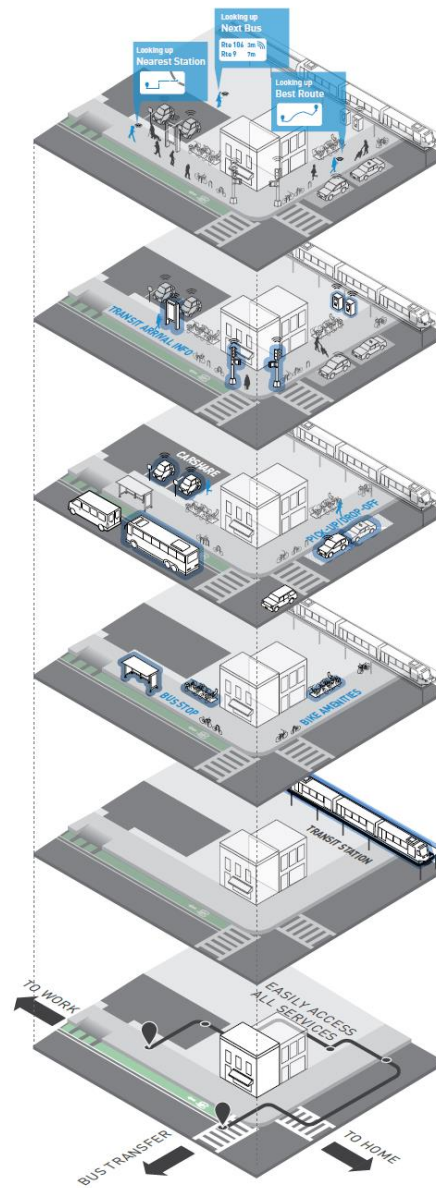
REAL-TIME  
NAVIGATION

MOBILITY  
SERVICES

INFRASTRUCTURE  
SUPPORTING  
MOBILITY

TRANSIT  
STATION

CONNECTIONS



Hamburg Hochbahn



Seattle Department of Transportation

# ELECTRIC VEHICLE CHARGING IN THE PUBLIC RIGHT-OF-WAY (EVCROW) PROGRAM

## SDOT Pilot Permit Program Requirements



Final – July 18, 2017



























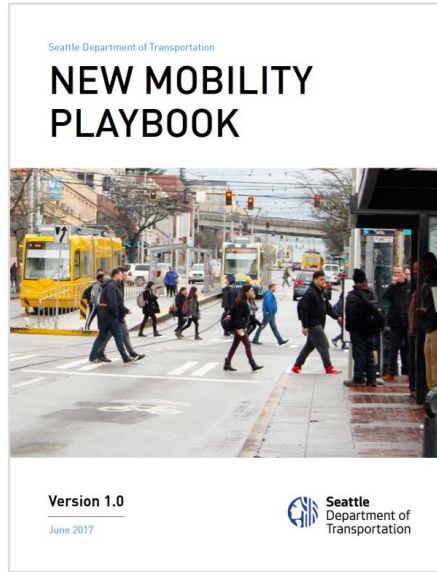












## Our five plays are to:

### PLAY 1:

Ensure new mobility delivers a fair and just transportation system for all

### PLAY 2:

Enable safer, more active, and people-first uses of the public right of way

### PLAY 3:

Reorganize and retool SDOT to manage innovation and data

### PLAY 4:

Build new information and data infrastructure so new services can “plug-and-play”

### PLAY 5:

Anticipate, adapt to, and leverage innovative and disruptive transportation technologies



IF WE LEAVE IT TO CHANCE...



IF WE SHAPE IT...